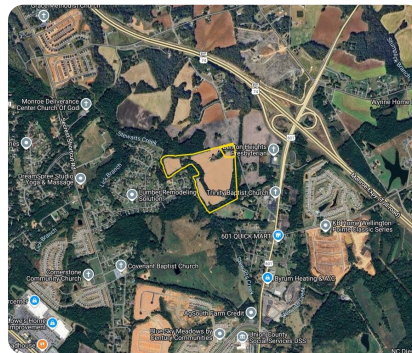
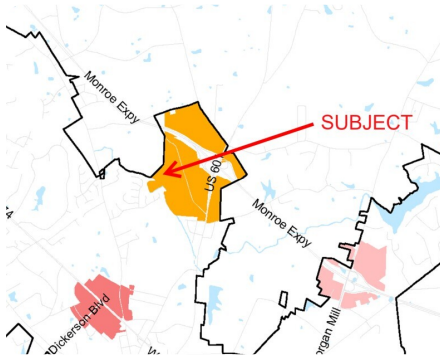




Monroe Bypass Mixed Use Acreage

51.54 +/- Acres | Union County, NC | CALL FOR PRICE



ADDRESS

311 Maple Hill Road
Monroe, NC 28110

LOCATION

From US-74 Bypass South take exit 264 for US-601 toward Monroe. Turn right on US-601 and in .5 miles turn right on Maple Hill Road. Property will be on your left in .5 miles

PROPERTY SUMMARY

This 51+/- tract presents a unique opportunity to develop a **mixed-use** project in the thriving Monroe Bypass corridor just south of Charlotte NC. The site is located off of Exit 264 at HWY 601 and is zoned Regional Corridor Mixed Use (RCMX) which allows for a multitude of uses. Public utilities are available subject to capacity granted by the City of Monroe. Access is from Maple Hill Road. The completion of the Monroe Bypass has spurred significant development at each of its interchanges as evidenced by the included active developments map.

nationalland.com/listing/monroe-bypass-mixed-use-acreage



National Land Realty
1822 S Wendover Road
Charlotte, NC 28211
NationalLand.com

Peter Mazeine
Office: 704-228-4925
Cell: 704-906-1202
Fax: 864-331-1610
Pmazeine@nationalland.com

Edward Mayer
Office: 704-610-6732
Cell: 704-998-1989
Fax: 864-331-1610
emayer@nationallandrealty.com

The above information is from sources deemed reliable, however the accuracy is not guaranteed.
National Land Realty assumes no liability for error, omissions or investment results.