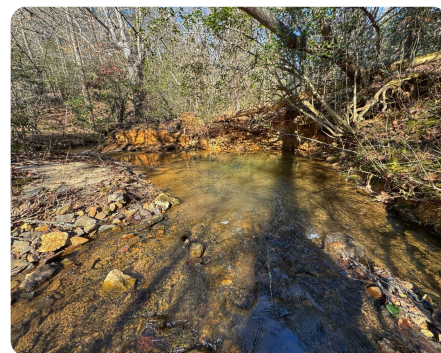
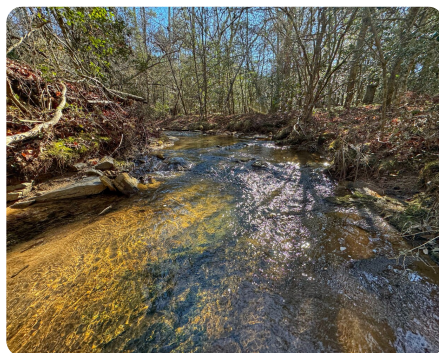
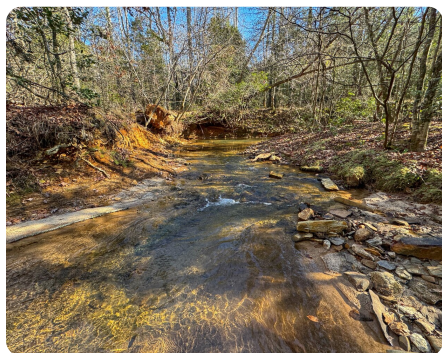


SOLD



NC HWY 18 Building & Rec Tract

23.3 +/- Acres | Catawba County, NC



ADDRESS

3631 NC 18 HWY
Vale, NC 28168

LOCATION

Call agent for directions. Showings
conducted by appointment only.

PROPERTY SUMMARY

Located in the serene countryside of Vale, NC, this 23.3 +/- acre property offers a rare opportunity to own a slice of nature. Accessible via an 18' deeded right-of-way easement off NC Hwy 18, this property provides a peaceful and secluded retreat, perfect for anyone looking to escape the hustle and bustle of daily life.

Surrounded by abundant wildlife, the land is a true haven for nature lovers. Enjoy observing a variety of species in their natural habitat, or explore the rolling terrain that showcases the beauty of the local ecosystem. A beautiful creek winds its way through the property, adding to the charm and tranquility of the setting.

With plenty of space and privacy, this property offers an ideal location for building your dream home, cabin, or weekend getaway. Whether you seek a quiet sanctuary for relaxation or a base for outdoor adventures, this land provides endless possibilities. Its seclusion ensures that you can enjoy peace and privacy while still being within reach of modern con

nationalland.com/listing/nc-hwy-18-building-rec-tract



National Land Realty
3265 S NC 127 Hwy
Hickory, NC 28602
NationalLand.com



Justin Sizemore
Office: 828-554-7256
Cell: 828-320-1610
Fax: 864-331-1610
Jsizemore@nationalland.com

The above information is from sources deemed reliable, however the accuracy is not guaranteed.
National Land Realty assumes no liability for error, omissions or investment results.