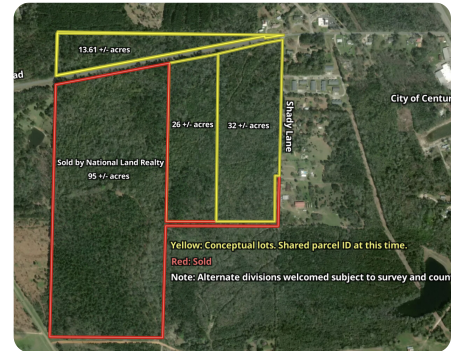




Century Development or Homesite Acreage

32 +/- Acres | Escambia County, FL | \$400,000



ADDRESS

0 W State Line Road
Tract C
Century, FL 32535

LOCATION

Contact agent for directions.

PROPERTY SUMMARY

Whether you're searching for a residential development investment or homesite with acreage suitable for hunting, farm conversion and more, this tract is it and lies only 30 minutes north of Pensacola. Its gently rolling, wooded and dry acreage adjoins the city limits of Century, Florida, +/- 1,580' 1,580' +/- of paved road frontage on Shady Lane, where power, water and sewer are located. It also has +/- 713' of paved road frontage on W State Line Road, where power and water are located. Zoning permits a density of one single family home per four acres, group living, mobile homes, livestock, and more! It is located 40 minutes north of Pensacola. Subject to survey and county subdivide approval. Additional acreage is available.

nationalland.com/listing/century-development-or-homesite-acreage



National Land Realty
9 N. Conception St.
Mobile, AL 36602
NationalLand.com



Chandler Guy
Office: 334-947-1684
Cell: 850-503-1307
Fax: 888-672-1810
Cguy@NationalLand.com

The above information is from sources deemed reliable, however the accuracy is not guaranteed.
National Land Realty assumes no liability for error, omissions or investment results.