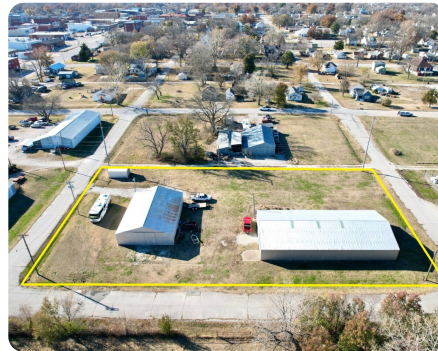


UNDER CONTRACT



Large Shop Buildings on 1/2 City Block

1.2 +/- Acres | Neosho County, KS | \$85,000



ADDRESS

201 & 227 N Ashby Ave
Chanute, KS 66720

LOCATION

North East of Chanute

PROPERTY SUMMARY

Large buildings on half city block, located on the east side of Chanute. South building: 44 x 60 - concrete floor - water and electric - bathroom - office with exterior walk-in door - 12' tall sliding doors on each end - zoned residential. North building: 50 x 100 - gravel floor - electric outlets on both walls - lights on timer - 12' tall sliding doors on each end - current rental income from multiple individuals @ \$50 monthly per space - zoned commercial or industrial. Small storage building on the southwest corner is rented for \$25 per month. Several opportunities exist with this property: keep it all for your needs - create a passive income by renting these spaces - use one, rent one - fence the lot, and offer outdoor storage. This listing consists of two different parcels and each large shop has its own electric meter. Owner prefers to sell as one package. Note - Buildings and lot are in the flood zone. Give us a call to see these spaces for yourself.

nationalland.com/listing/large-shop-buildings-on-12-city-block



National Land Realty
222 W. Main
Shop 3
Chanute, KS 66720
NationalLand.com

Valorie Vietti
Office: 620-383-0689
Cell: 620-212-5150
Vvietti@NationalLand.com

Tim Vietti
Office: 620-390-2844
Cell: 620-305-8180
Tvietti@NationalLand.com

The above information is from sources deemed reliable, however the accuracy is not guaranteed.
National Land Realty assumes no liability for error, omissions or investment results.