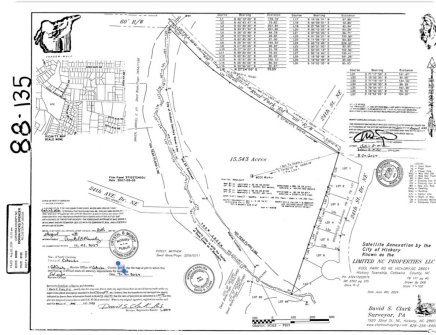


UNDER CONTRACT



KOOL PARK RD NE Development Tract!

15.7 +/- Acres | Catawba County, NC | \$705,000



ADDRESS

2360 Kool Park Rd. NE
Hickory, NC 28601

LOCATION

2360 Kool Park Rd. NE Hickory NC
28601

PROPERTY SUMMARY

Discover 15.54 +/- acres of residential development land recently annexed into Hickory. This wooded property is zoned R-2 (4 dwelling units per acre) with direct access to municipal water and sewer services and has more than 1,000 feet of frontage on Kool Park Road. Close to churches, schools, parks, and a wide range of shopping, this 15.54 +/- acre site is ideally located for a future residential community.

nationalland.com/listing/kool-park-rd-ne-development-tract



National Land Realty
3265 S NC 127 Hwy
Hickory, NC 28602
NationalLand.com



Chase Blalock
Office: 980-400-3943
Cell: 919-280-5180
Fax: 864-331-1610
Cblalock@nationalland.com

The above information is from sources deemed reliable, however the accuracy is not guaranteed.
National Land Realty assumes no liability for error, omissions or investment results.