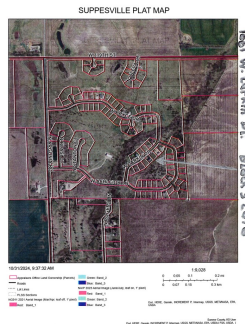




BLK 3 Lot 6, Country Living, Open Build, Barndominium Options

0.34 +/- Acres | Sumner County, KS | \$10,000



ADDRESS

1661 W Larkin Dr.
Milton, KS 67106

LOCATION

K-42 and Argonia Rd., North 1/2 mile
to Ashleigh Ln. (25-min SW of Wichita
Airport)

PROPERTY SUMMARY

COUNTRY HOMESITE Vacant Lot, Block 3 Lot 6, 1661 W. Larkin Dr. The lot backs to the east with views of natural grass; fir trees, and sunrise too - beautiful! Shovel-ready, country lot, at Suppes Subdivision (known as Suppesville) near Milton, 25 minutes southwest of Wichita Kansas. Great for Barndominium and Country Home. Call (316) 371-4469, Jeffrey D Richardson, Managing Broker, National Land Realty Central Kansas LLC., for more details and let's tie up your own piece of country!

nationalland.com/listing/blk-3-lot-6-country-openbuild-barndominiumoptions



National Land Realty
1207 S. Tyler Rd
Ste. C
Wichita, KS 67209
Nationalland.com



Jeffrey D Richardson
Office: 316-364-7995
Cell: 316-371-4469
Fax: 864-331-1610
Jrichardson@nationalland.com

The above information is from sources deemed reliable, however the accuracy is not guaranteed.
National Land Realty assumes no liability for error, omissions or investment results.