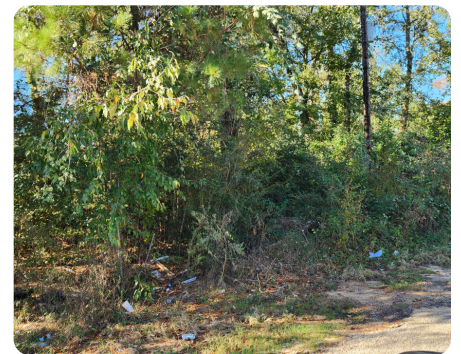
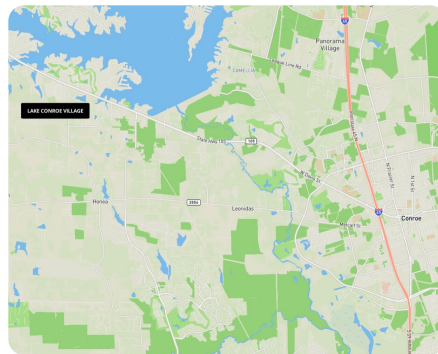
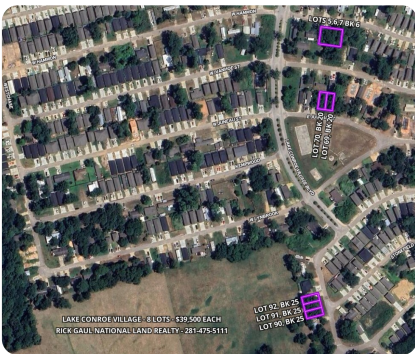


SOLD



8 lots in Lake Conroe Village - Investment or Builder Opportunity!

0.38 +/- Acres | Montgomery County, TX



ADDRESS

16730 E Juneau
Montgomery, TX 77316

LOCATION

From I45 take TX-105 west for 9.7 miles. Turn left onto Lake Conroe Village Blvd.

PROPERTY SUMMARY

Investment or Builder Opportunity! I have 8 lots, one seller, \$39,500 each. Buy one or buy all 8. City Water & Sewer. Lake Conroe Village. Within Oak Hill Junior High and Lake Creek High School district. These are priced to sell. Two of the lots have cement driveways in place. Across the street from Lake Conroe, close to downtown Conroe, just off TX-105, and easy access to I45. The 3 lots on E Hammon, may or may not be able build on separately.

nationalland.com/listing/8-lots-in-lake-conroe-village-investment-or-builder-opportunity



National Land Realty
Regus (APEX) Executive Suites
1135 Grand Central Parkway - Ste 302
Conroe, TX 77304
NationalLand.com



Rick Gaul
Office: 281-317-0220
Cell: 281-475-5111
Fax: 864-331-1610
Rgaul@nationalland.com

The above information is from sources deemed reliable, however the accuracy is not guaranteed. National Land Realty assumes no liability for error, omissions or investment results.