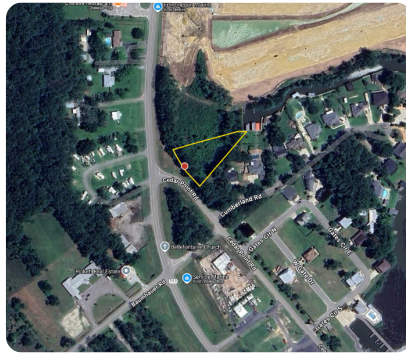




## Prime South Alabama Waterfront Residential Site #2

0.76 +/- Acres | Mobile County, AL | \$79,000



### ADDRESS

0 Cedar Point Drive Lot #2  
Theodore, AL 36582

### LOCATION

Contact listing agent

### PROPERTY SUMMARY

Nestled in a serene, wooded setting, this .762-acre lot offers a perfect balance of privacy and natural beauty. The property provides ample space to construct a custom residential home, tailored to your lifestyle. This property features the opportunity to build a private boat slip, with direct water access to Fowl River. Perfect for boating, fishing, and water activities.

Whether you're looking for a permanent residence, a vacation getaway, or an investment opportunity, this property offers versatility to match your vision. Don't miss out on this unique opportunity to own a piece of paradise!

[nationalland.com/listing/prime-south-alabama-waterfront-residential-site-2](https://nationalland.com/listing/prime-south-alabama-waterfront-residential-site-2)



National Land Realty  
9 N. Conception St.  
Mobile, AL 36602  
[NationalLand.com](https://NationalLand.com)



**Hillary Engler**  
Office: 251-758-0374  
Cell: 251-295-1177  
Fax: 888-672-1810  
[Hengler@nationalland.com](mailto:Hengler@nationalland.com)

The above information is from sources deemed reliable, however the accuracy is not guaranteed.  
National Land Realty assumes no liability for error, omissions or investment results.