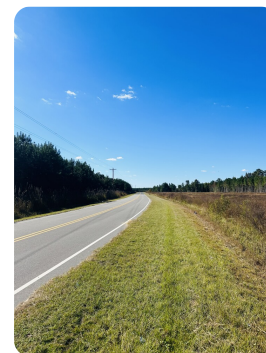
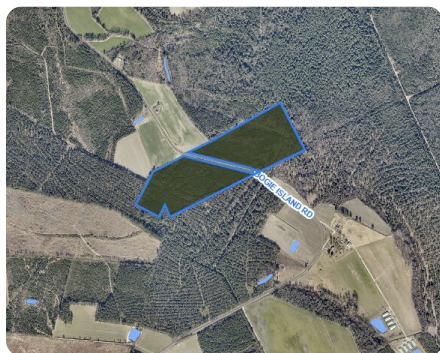


SOLD

NATIONAL LAND REALTY®

Bogie Island Tract 2

27.75 +/- Acres | Cumberland County, NC



ADDRESS

0 Bogie Island Road
Fayetteville, NC 28312

LOCATION

0 Bogie Island Road

PROPERTY SUMMARY

Bogie Island consists of 4 acres cleared and the remainder being pre-merchantable pine. With over 2700' of paved road frontage makes this the ideal property for building your secluded dream home or for the developer looking to subdivide. In addition to being a great place to live this property would also make a great hunting retreat. Just add a few food plots and you'll have room for you and many friends to enjoy years of great hunting.

Located just 13 miles to Fayetteville, 25 miles to Fort Liberty, 70 miles to Raleigh, and only 6 miles to Stedman.

nationalland.com/listing/bogie-island-tract-2



National Land Realty
2220 Peanut Plant Road
Elizabethtown, NC 28337
NationalLand.com

Coleman Tatum
Office: 910-460-3178
Cell: 910-991-6517
Fax: 864-331-1610
Ctatum@nationalland.com

The above information is from sources deemed reliable, however the accuracy is not guaranteed. National Land Realty assumes no liability for error, omissions or investment results.