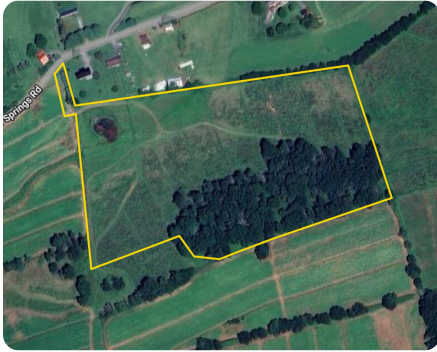




## Cedar Springs Acreage Tract B

20.98 +/- Acres | Smyth County, VA | \$209,800



### ADDRESS

0 Cedar Springs Rd  
Tract B  
Sugar Grove, VA 24375

### LOCATION

From I-81N take exit 45 and turn right onto SR-16 S. In 8 mi take a slight left turn onto Slemp Creek Rd. In 0.6 mi turn left onto Cedar Springs Rd. In approximately one mi the property will be on your right.

### PROPERTY SUMMARY

Opportunity for +/- 20.98 acres in Sugar Grove Virginia. This property features a mixture of cleared and wooded acreage. A portion of the cleared acreage was previously used to farm Christmas trees. There are several nice home sites on the property that will offer long-range, valley views. More acreage available as is property is part of a larger +/- 50-acre tract.

[nationalland.com/listing/cedar-springs-acreage-tract-b](https://nationalland.com/listing/cedar-springs-acreage-tract-b)



**National Land Realty**  
2920 West Broad Street  
Richmond, VA 23230  
[NationalLand.com](https://NationalLand.com)

**Casey Reynolds**  
Office: 540-516-3173  
Cell: 540-577-4249  
Fax: 864-331-1610  
[CReynolds@nationalland.com](mailto:CReynolds@nationalland.com)

**Parker Breuel**  
Office: 423-840-7458  
Cell: 423-833-7012  
Fax: 864-331-1610  
[PBreuel@NationalLand.com](mailto:PBreuel@NationalLand.com)

The above information is from sources deemed reliable, however the accuracy is not guaranteed.  
National Land Realty assumes no liability for error, omissions or investment results.