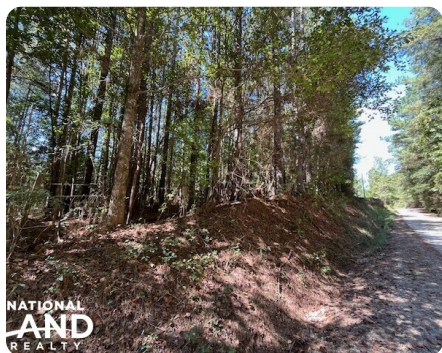


**SOLD**



## Bethany Church Road Homesite

5.45 +/- Acres | Morgan County, GA



### ADDRESS

2741 Bethany Church Road  
Madison, GA 30650

### LOCATION

From Madison, go South towards Eatonton on Eatonton Road (Hwy 129/441) approximately 8.4 miles, turn left on Franklin Road (which turns into Cochran Rd), after about 1 mile turn left on Bethany Church Road. Property is about .5 miles on the left.

### PROPERTY SUMMARY

Fairly level to gently rolling tract consisting of 5.45 +/- acres, located on Bethany Church Road in Morgan County. Property consists mainly of mature timber with a couple areas that appear to have been cleared at some point. Existing CGEMC powerline right of way near the southern boundary of this tract will make it easy to get power to any of the multiple homesite locations this tract offers. Some fencing in place along the property boundaries with a gate at Bethany Church Road. Contact Matt Fullbright @ 706.817.7253 or Michael Smith @ 678.300.7442 for more information.

[nationalland.com/listing/bethany-church-road-homesite](https://nationalland.com/listing/bethany-church-road-homesite)



**National Land Realty**  
1070 Salem Walk Drive  
Suite 4  
Greensboro, GA 30642  
[Nationalland.com](https://Nationalland.com)

**Michael Smith**  
Office: 678-909-1219  
Cell: 678-300-7442  
Fax: 864-331-1610  
[msmith@nationalland.com](mailto:msmith@nationalland.com)

**Matt Fullbright**  
Office: 706-203-4116  
Cell: 706-817-7253  
Fax: 864-331-1610  
[Mfullbright@nationalland.com](mailto:Mfullbright@nationalland.com)

The above information is from sources deemed reliable, however the accuracy is not guaranteed.  
National Land Realty assumes no liability for error, omissions or investment results.