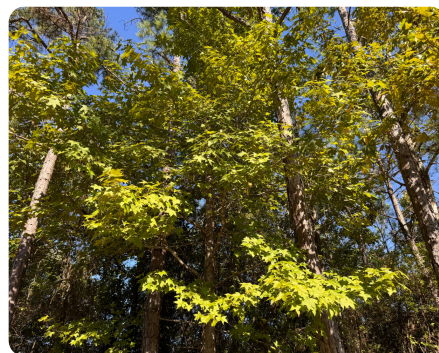
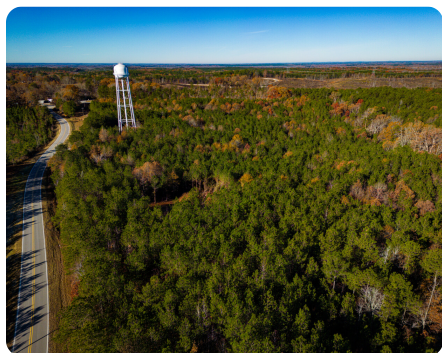


SOLD



Ryan Salem Road Homesite Lot #2

10.95 +/- Acres | Itawamba County, MS



ADDRESS

0 Ryan Salem Rd Lot 2
Fulton, MS 38843

LOCATION

From Fulton, MS:

Head north on John Rankin Highway.

At the intersection of John Rankin Hwy & Ryan Salem Rd, turn right. The property is on your left. Look for the signs, the lots are marked.

PROPERTY SUMMARY

OWNER FINANCING AVAILABLE! See Details Below!

Situated due north of Fulton, MS approximately 11 miles, a mere "stone's throw" from the Tennessee Tombigbee waterway, you'll find this beautiful, serene & hard to find 10.95 +/- acre wooded wonderland! This would make a wonderful homesite with room to roam. You're a short 1.25-mile drive to the Saucier Creek Recreational area and boat ramp with great access to excellent fishing and plenty of public land hunting opportunities alongside the waterway! With ample paved frontage on Ryan-Salem Road, the possibilities are endless for this tract! Don't miss out on this opportunity to own this hard-to-find acreage for your future home or cabin site!

nationalland.com/listing/ryan-salem-road-homesite-lot-2



National Land Realty
270 CR 1742
Saltillo, MS 38866
NationalLand.com



Dustin Clardy
Office: 662-493-3194
Cell: 662-322-4861
Fax: 662-796-3618
dclardy@nationalland.com

The above information is from sources deemed reliable, however the accuracy is not guaranteed.
National Land Realty assumes no liability for error, omissions or investment results.