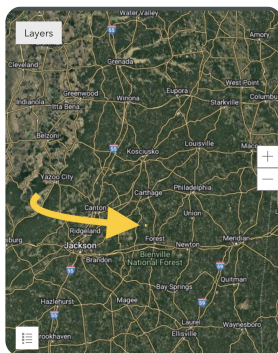
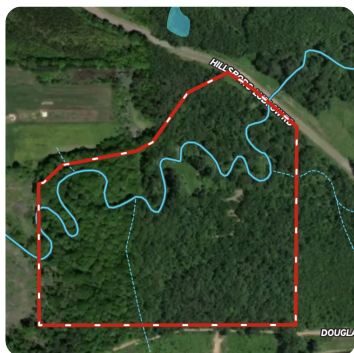


**SOLD**



## Scott County MS

30 +/- Acres | Scott County, MS



### ADDRESS

0 Hillsboro-Ludlow Rd  
Forest, MS 39074

### LOCATION

From the city of Forest Ms , take HWY 35 N to Old Jackson Rd on your left. Proceed to the intersection of Hillsboro - Ludlow Rd ,turn right at the intersection and proceed North . Drive approximately 5 miles , the property will be on your left.

### PROPERTY SUMMARY

Here it is. Finally, a small tract that is close to town, great school systems, and future building sites! The main entrance is black topped with power, utilities, timber, deer, turkeys, and small game. Haley Creek runs along the Northern portion of the property allowing for some serious summertime fun and fishing opportunities. If you're looking for a small tract to build on or have a nice weekend honey hole, then this is must see. The town of Forest is just 10 minutes away. Jackson Metro area is approximately 35 to 40 minutes. Starkville is approximately 1 hour and 40 minutes.

[nationalland.com/listing/scott-county-ms](http://nationalland.com/listing/scott-county-ms)



**National Land Realty**  
9 N. Conception St.  
Mobile, AL 36602  
[NationalLand.com](http://NationalLand.com)

**Clint Flowers, ALC**  
Office: 251-572-7366  
Cell: 251-387-0787  
[cflowers@nationalland.com](mailto:cflowers@nationalland.com)

**Greg Clearman**  
Office: 601-895-1956  
Cell: 601-408-0019  
Fax: 601-878-5424  
[Gclearman@NationalLand.com](mailto:Gclearman@NationalLand.com)

The above information is from sources deemed reliable, however the accuracy is not guaranteed.  
National Land Realty assumes no liability for error, omissions or investment results.