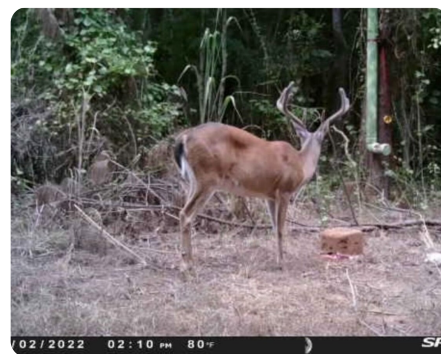


**SOLD**



## Hunting, Investment and Recreational Property With Home or Cabin Site

32.04 +/- Acres | Attala County, MS



### ADDRESS

CR 2120  
Ethel, MS 39067

### LOCATION

From the intersection of highway 12/19 and highway 43N in Kosciusko, MS follow MS 43 north for 9.1 miles. Turn right onto CR 2120 and travel 3/10's of a mile. Property will be on your left.

### PROPERTY SUMMARY

This small hunting and recreational property, located just east of Highway 43, approximately 10 miles north of Kosciusko, offers seclusion, county road frontage, lots of whitetail deer, turkeys, and other game, nearby utilities, a quiet country setting, and much more. A gated entrance and gravel driveway lead to a great hilltop site for a barndominium, cabin or home, and an existing trail system and power line right of way are in place to get around the property with ease. Call today to learn more!

[nationalland.com/listing/hunting-investment-and-recreational-property-with-home-or-cabin-site](https://nationalland.com/listing/hunting-investment-and-recreational-property-with-home-or-cabin-site)



National Land Realty  
223 Trace Ridge Drive  
Kosciusko, MS 39090  
[NationalLand.com](https://NationalLand.com)



**Ben Rudolph**  
Office: 601-963-8671  
Cell: 601-575-0972  
[Brudolph@NationalLand.com](mailto:Brudolph@NationalLand.com)

The above information is from sources deemed reliable, however the accuracy is not guaranteed.  
National Land Realty assumes no liability for error, omissions or investment results.