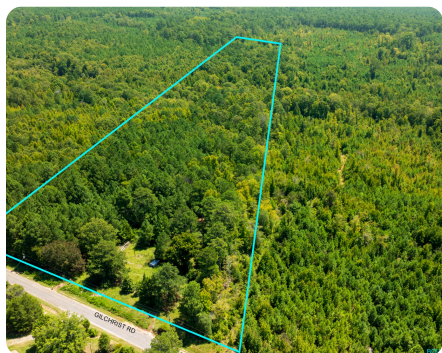


**SOLD**



## Edgefield Recreational Tract

13.47 +/- Acres | Edgefield County, SC



### ADDRESS

0 Gilchrist Rd  
McCormick, SC 29835

### LOCATION

At intersection of Hwy 221 and Hwy 378, take Highway 378 for 9.5 miles then turn right on Gilchrist Rd. Travel 2 miles on Gilchrist Rd, property is on the left, look for sign.

### PROPERTY SUMMARY

If you're looking for a place to hunt or a quiet country spot to call home, this 13.78-acre property in Edgefield is just right. Perfect for hunters, a rural retreat, or a country homesite. Equipped with electricity, public water, a well, and a septic tank, this property is ready for your next adventure. An access road runs through the property, making it easy to explore. Cyper Creek flows through the property, a perfect setting for recreation and attracting local wildlife such as Deer and Turkey. Equipped with a deer stand in an open field, plus a mix of mature pines and hardwoods, this property is a nature lover's dream. Enjoy the best of country living with this unique opportunity!

[nationalland.com/listing/edgefield-recreational-tract](https://nationalland.com/listing/edgefield-recreational-tract)



**National Land Realty**  
7001 Pelham Road  
Suite M  
Greenville, SC 29615  
[Nationalland.com](https://Nationalland.com)



**Matthew Brownlee**  
Office: 864-734-4072  
Cell: 864-684-5622  
Fax: 864-331-1610  
[Mbrownlee@nationalland.com](mailto:Mbrownlee@nationalland.com)

The above information is from sources deemed reliable, however the accuracy is not guaranteed.  
National Land Realty assumes no liability for error, omissions or investment results.