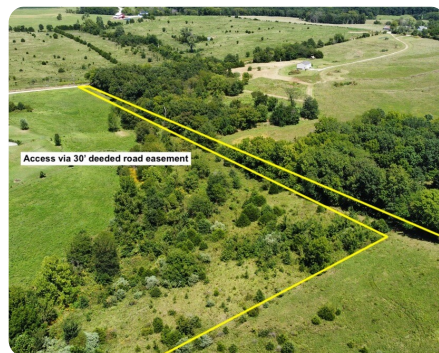
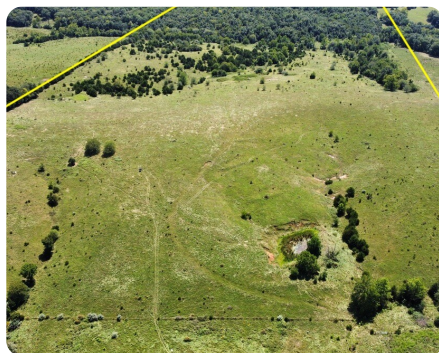


SOLD



Central MO Pasture

85 +/- Acres | Cooper County, MO



ADDRESS

01 Harris Road
California, MO 65018

LOCATION

Start of easement can be found at:
24301 HARRIS RD CALIFORNIA

PROPERTY SUMMARY

A true Missouri grass farm can be hard to find these days! At over 70% clean/square pasture, this farm is a rare find. Accessible via county road & 30' deeded easement, this land is suitable for hay production, cattle grazing, or a potential homestead. The entire farm has perimeter fencing. Fencing on the north end could be added to keep cattle out of the timber. A small pond and creek are located on the south end of the property. Located minutes from the HWY, this would make a great addition for the growing landowner or first-time operator. The property and access road have been surveyed. Seller will complete road construction prior to closing.

nationalland.com/listing/central-mo-pasture



National Land Realty
2158 Hwy Z
Wentzville, MO 63385
NationalLand.com



Alec Wardenburg
Office: 636-429-4711
Cell: 636-577-5288
Fax: 864-331-1610
awardenburg@nationalland.com

The above information is from sources deemed reliable, however the accuracy is not guaranteed.
National Land Realty assumes no liability for error, omissions or investment results.