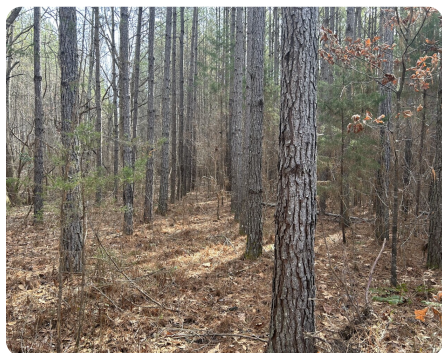


**SOLD**



## Big Creek Timber Investment with Income

70 +/- Acres | Calhoun County, MS



### ADDRESS

0 CR 319  
Big Creek, MS 38914

### LOCATION

From Big Creek take CR 319 north  
about 3 miles north.

### PROPERTY SUMMARY

This pine timberland tract offers great hunting opportunities along Lickup Creek just north of the town of Big Creek in close proximity to great fishing at Grenada Lake. Multiple access points along the paved road with utilities available. Timber ages from mature pine to cutover that needs to be replanted with some of that timber being enrolled in CRP with yearly income. There are approximately 13 acres left to be replanted with approximately 25 acres un-thinned pines and 25 acres thinned pines. Turkey tracts and deer tracts were seen on the initial visit.

[nationalland.com/listing/big-creek-timber-investment-with-income](https://nationalland.com/listing/big-creek-timber-investment-with-income)



**National Land Realty**  
270 CR 1742  
Saltillo, MS 38866  
[NationalLand.com](https://NationalLand.com)

**Andrew Lewis**  
Office: 662-807-6540  
Cell: 662-251-7530  
Fax: 864-331-1610  
[Alewis@NationalLand.com](mailto:Alewis@NationalLand.com)

**Keith Morris**  
Office: 662-498-6605  
Cell: 713-382-7975  
[Kmorris@NationalLand.com](mailto:Kmorris@NationalLand.com)

The above information is from sources deemed reliable, however the accuracy is not guaranteed.  
National Land Realty assumes no liability for error, omissions or investment results.