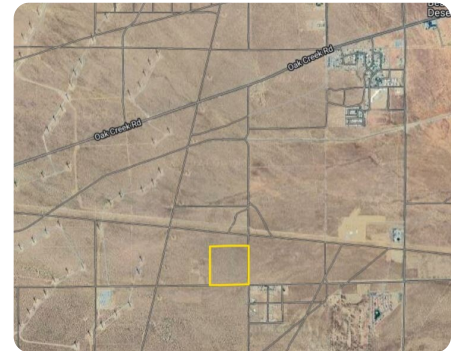




## Disler 40 Acre Kern County

40 +/- Acres | Kern County, CA | \$350,000



### ADDRESS

0000 Camelot Blvd  
California City, CA 92501

### LOCATION

Latitude/Longitude: 35.033197/-  
118.205765

### PROPERTY SUMMARY

This 40-acre property is nestled with a large area of alternative energy projects, such as wind, solar, and electric transmission lines. This is a great opportunity to participate in this gateway of energy activity within the Mojave area near the I-14/Aerospace Highway corridor. This property is priced right to sell and may not last very long, so energy investors get ready to make your best offers.

[nationalland.com/listing/disler-40-acre-kern-county](http://nationalland.com/listing/disler-40-acre-kern-county)



National Land Realty  
4420 Hotel Circle Court  
Suite 340  
San Diego, CA 92108  
[NationalLand.com](http://NationalLand.com)



**Bernard Johnson**  
Office: 619-848-1835  
Cell: 619-249-8444  
Fax: 619-255-1501  
[bjohnson@nationalland.com](mailto:bjohnson@nationalland.com)

The above information is from sources deemed reliable, however the accuracy is not guaranteed.  
National Land Realty assumes no liability for error, omissions or investment results.