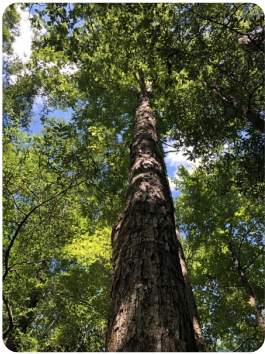




Owassa Hunting Retreat and Timber Investment

89.9 +/- Acres | Conecuh County, AL | \$425,000



ADDRESS

1081 Mt. Zion Rd.
Evergreen, AL 36401

LOCATION

From Exit 101 on I-65 travel North on Hwy 29 for approximately 1 mile. Turn left on Mt. Zion Rd. and travel approximately 1 mile until you reach the property.

PROPERTY SUMMARY

This is a turnkey hunting property with everything you could wish for in your dream hunting and recreational tract. Approximately 89.9 +/- acres that include excellent hunting habitat, several wildlife openings, deer stands, and more. This tract has excellent timber investment potential with merchantable timber throughout the property. Power access, well, and septic already connected to a manufactured home in place. A metal shop building with a roll-up door in front to keep all your equipment secure. Enjoy an established trail system throughout the property also. Located in just minutes from Exit 101 on I-65 in Conecuh Co.

nationalland.com/listing/owassa-hunting-retreat-and-timber-investment



National Land Realty
9 N. Conception St.
Mobile, AL 36602
NationalLand.com



Will Daniels
Office: 251-276-6619
Cell: 251-282-7077
Fax: 888-672-1810
Wdaniels@nationalland.com

The above information is from sources deemed reliable, however the accuracy is not guaranteed.
National Land Realty assumes no liability for error, omissions or investment results.