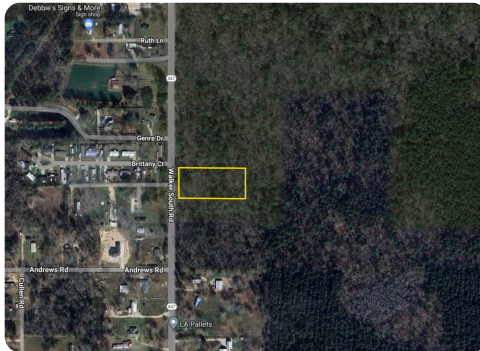




## Residential Lot 8 Walker S Rd.

2 +/- Acres | Livingston Parish, LA | \$90,000



### ADDRESS

Tract 8 Walker S Rd.  
Walker, LA 70726

### PROPERTY SUMMARY

Beautiful wooded property with ample privacy. Culvert and driveway included. Bring your house plans and build your dream home! Close to 1-12, restaurants, schools, and more!

### LOCATION

From I-12 exit at Walker, at the roundabout continue onto Hwy 447 Walker S Rd. Go about 6 miles and property will be on the left. Sign on property.

[nationalland.com/listing/residential-lot-8-walker-s-rd](https://nationalland.com/listing/residential-lot-8-walker-s-rd)



**National Land Realty**  
37283 Swamp Road  
Unit 702  
Prairieville, LA 70769  
[NationalLand.com](https://NationalLand.com)



**Allison Liuzzo**  
Office: 225-831-8677  
Cell: 225-773-6525  
Fax: 864-331-1610  
[Aliuzzo@nationalland.com](mailto:Aliuzzo@nationalland.com)

The above information is from sources deemed reliable, however the accuracy is not guaranteed.  
National Land Realty assumes no liability for error, omissions or investment results.