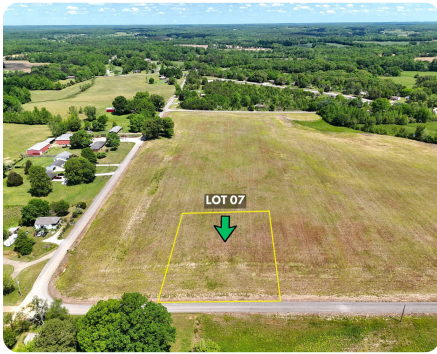


**UNDER CONTRACT**



## Lot 7 - County Road 263

1.29 +/- Acres | Lauderdale County, AL | \$28,900



### ADDRESS

7 County Road 263  
Florence, AL 35633

### LOCATION

Located on County Road 263

### PROPERTY SUMMARY

Introducing Rawhide Estates, a newly surveyed subdivision in the Cloverdale Community, minutes from downtown Florence and UNA. Spacious, flat, fertile 2.43+ acre lots, each perc-tested and approved by Lauderdale County Health Department for conventional septic systems. Lots offer 201'+ road frontage, 279'+ depth, with utilities at road frontage including water, electricity, gas, cable, internet, and trash services. New surveys and legal descriptions completed; stakes set post-harvest. Protective covenants allow residential, ranching, or agricultural use; restrict commercial, industrial, junkyard use, pigs, or dog boarding. Tiny/manufactured homes permitted with HUD compliance; RVs must be late-model/self-contained.

[nationalland.com/listing/lot-7-county-road-263-1](https://nationalland.com/listing/lot-7-county-road-263-1)



**National Land Realty**  
2101 Clinton Avenue West  
Suite 301B  
Huntsville, AL 35805  
[NationalLand.com](https://NationalLand.com)

**Jonathan Berryhill**  
Office: 256-408-5130  
Cell: 256-874-7354  
Fax: 864-331-1610  
[Jberryhill@NationalLand.com](mailto:Jberryhill@NationalLand.com)

**Levi Berryhill**  
Office: 256-798-3578  
Cell: 256-702-4015  
Fax: 864-331-1610  
[Lberryhill@nationalland.com](mailto:Lberryhill@nationalland.com)

The above information is from sources deemed reliable, however the accuracy is not guaranteed.  
National Land Realty assumes no liability for error, omissions or investment results.