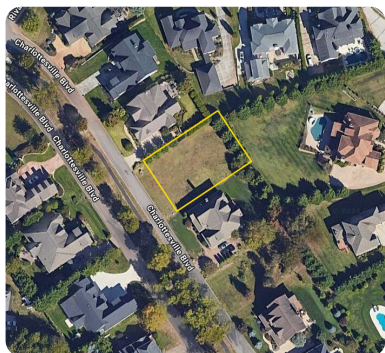


SOLD



Jefferson Park Residential Lot

0.27 +/- Acres | Knox County, TN



ADDRESS

1517 Charlottesville Blvd
Knoxville, TN 37922

LOCATION

From Westland Dr turn right onto S Northshore Dr. In 3.3 mi turn right onto Charlottesville Blvd. In 0.2 mi the lot is on your right.

PROPERTY SUMMARY

One of the few remaining undeveloped lots in the desirable Jefferson Park Community. Jefferson Park is a waterfront community on the shores of Fort Loudoun Lake. Amenities include miles of walking trails, basketball court, community pool, common areas, and a boat dock. Close proximity to Turkey Creek and the property lies within the Farragut School district. Level lot with utilities on site. Aerial maps are approximate. Please refer to the plat for more accurate representation of lot lines. Call our office for more information.

nationalland.com/listing/jefferson-park-residential-lot



National Land Realty
3520 Brandon Lee Dr.
Maryville, TN 37804
NationalLand.com



Parker Breuel
Office: 423-840-7458
Cell: 423-833-7012
Fax: 864-331-1610
Pbreuel@NationalLand.com

The above information is from sources deemed reliable, however the accuracy is not guaranteed.
National Land Realty assumes no liability for error, omissions or investment results.