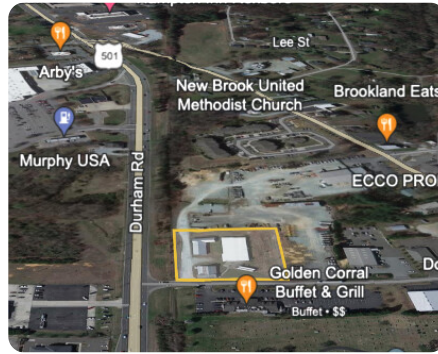


UNDER CONTRACT



25 Weeks Drive, Roxboro

1.7 +/- Acres | Person County, NC | \$650,000



ADDRESS

25 Weeks Dr
Roxboro, NC 27573

LOCATION

From Durham head northwest on I-85 S. Take exit 176 for US-501 N/Duke St toward Gregson St/Northgate. Use the right 2 lanes to turn right onto US-501 N/N Duke St. In 26 miles turn right onto Weeks Drive.

PROPERTY SUMMARY

Introducing an exceptional redevelopment opportunity in Roxboro, NC! This prime corner commercial lot spans 1.7 +/- acres with highway business zoning, offering unparalleled access and visibility along US 501. Located just a 30-minute drive from Durham, this property is strategically positioned at the heart of the area's major retailers.

Featuring three buildings totaling approximately 22,000 SF, formerly used for broom and mop manufacturing, this property holds immense potential for redevelopment. Whether for highway business ventures or self-storage facilities, its strategic location and versatile space make it an ideal investment opportunity.

nationalland.com/listing/25-weeks-drive-roxboro



National Land Realty
4221 Sentimental Ln
Apex, NC 27539
NationalLand.com



Cory Bowes
Office: 919-646-2455
Cell: 336-583-5370
Fax: 864-331-1610
Cbowes@nationalland.com

The above information is from sources deemed reliable, however the accuracy is not guaranteed.
National Land Realty assumes no liability for error, omissions or investment results.