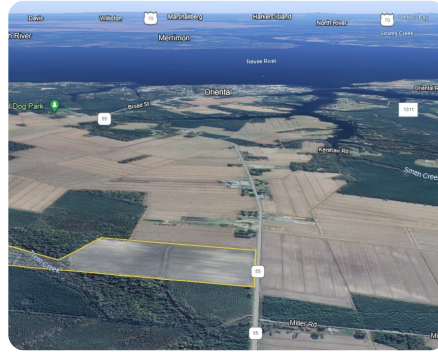


SOLD



Stowe Farm – Row Crop and Recreation Investment

58.73 +/- Acres | Pamlico County, NC | CALL FOR PRICE



ADDRESS

00 NC 55 HWY
Oriental, NC 28571

LOCATION

From Bayboro take NC HWY 55E for approximately 6.8 miles. The property will be on your left.

PROPERTY SUMMARY

This 58+/- acre property is located only four minutes north of Oriental, North Carolina, better known as the **"Sailing Capital of North Carolina"**.

The site is comprised of approximately **48+/- acres of productive cropland** along with **10+/- acres of mixed timber**. There is potential to build a residence on the property with ample access from NC 55 and public water and utilities available. Residential construction on similar soil types in the area would indicate the ability to utilize conventional septic but would be subject to evaluation by a soil scientist.

The topography is generally flat with a network of drainage ditches allowing the predominantly Arapahoe, Charleston, and Stockton soils to maximize their per-acre yield.

From an investment perspective, the property currently generates income from crop production while the underlying dirt value benefits from its proximity to Oriental.

nationalland.com/listing/stowe-farm-row-crop-and-recreation-investment



National Land Realty
1822 S Wendover Road
Charlotte, NC 28211
NationalLand.com

Peter Mazeine
Office: 704-228-4925
Cell: 704-906-1202
Fax: 864-331-1610
Pmazeine@nationalland.com

Aaron Sutton
Office: 252-486-5488
Cell: 252-560-9593
Fax: 864-331-1610
asutton@nationalland.com

The above information is from sources deemed reliable, however the accuracy is not guaranteed.
National Land Realty assumes no liability for error, omissions or investment results.