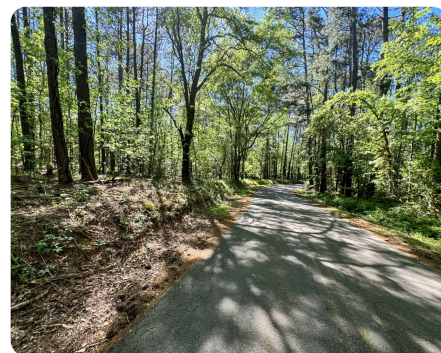


SOLD



Murphy Rd Residential Lot

4.98 +/- Acres | Anderson County, SC



ADDRESS

0 Murphy Rd
Anderson, SC 29626

LOCATION

From HWY 187 - Turn onto Murphy Rd
- The property is on the right hand side of the road (across from Skip-J Range).

PROPERTY SUMMARY

Discover the perfect blend of rural serenity and urban convenience with this remarkable 5-acre residential homesite in Anderson, SC. Located in a sought-after area known for its natural beauty and close-knit community, this expansive parcel offers an exceptional opportunity to create your own slice of paradise. The property is located across the street from Skip-J Range - a private shooting range.

Conveniently located just a short drive from downtown Anderson, you'll have easy access to a variety of amenities, including shopping, dining, and entertainment options.

Don't miss out on this incredible opportunity to own a piece of Anderson's countryside. Whether you're looking for a weekend getaway, a place to retire, or a place to call home, this 5-acre residential homesite offers endless possibilities. Schedule your showing today and start imagining the life you've always dreamed of!

nationalland.com/listing/murphy-rd-residential-lot



National Land Realty
7001 Pelham Road
Suite M
Greenville, SC 29615
Nationalland.com



Paul Floyd
Office: 864-635-4475
Cell: 864-661-5255
Fax: 864-331-1601
pfloyd@nationalland.com

The above information is from sources deemed reliable, however the accuracy is not guaranteed.
National Land Realty assumes no liability for error, omissions or investment results.