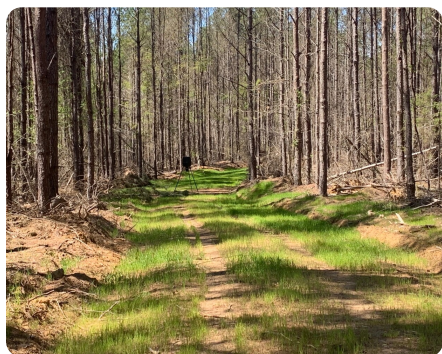


**SOLD**



## Recreation, Homesite and Pine Plantation Investment

60.91 +/- Acres | Calhoun County, MS



### ADDRESS

0 County Road 406  
Calhoun City, MS 38916

### LOCATION

Take Highway 9 South past Pittsboro, MS to CR 406 (Academy Road) and property will be on the right.

### PROPERTY SUMMARY

Thinned 18-year-old pine plantation with paved road frontage and utilities at the road. Potential homesites along the road. Great interior road system for easy access to the property with established food plots for hunting. Approximately 40 minutes to Oxford and close proximity to Grenada Lake, Tupelo, and Pontotoc. Seller will retain half of mineral rights.

[nationalland.com/listing/recreation-homesite-and-pine-plantation-investment](https://nationalland.com/listing/recreation-homesite-and-pine-plantation-investment)



**National Land Realty**  
270 CR 1742  
Saltillo, MS 38866  
[NationalLand.com](https://NationalLand.com)

**Keith Morris**  
Office: 662-498-6605  
Cell: 713-382-7975  
[Kmorris@NationalLand.com](mailto:Kmorris@NationalLand.com)

**Andrew Lewis**  
Office: 662-807-6540  
Cell: 662-251-7530  
Fax: 864-331-1610  
[Alewis@NationalLand.com](mailto:Alewis@NationalLand.com)

The above information is from sources deemed reliable, however the accuracy is not guaranteed.  
National Land Realty assumes no liability for error, omissions or investment results.