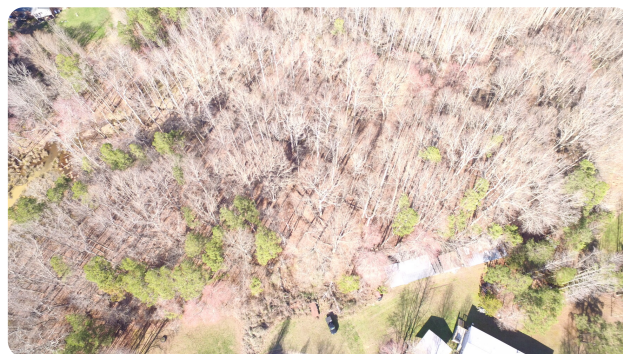


SOLD



1.0 Acres Residential Lot - Outside City Limits - Roxboro

1 +/- Acres | Person County, NC



ADDRESS

Pepper Pot Place, Tax Map 92 80
Roxboro, NC 27573

LOCATION

From 885 North, Exit 176 to Duke
Street/Hwy 501. T/R Old Durham
Road, T/R Lucy Garrett Road, T/L Billy
Hicks Road, T/L Pepper Pot Place -
lot at the end of the street.

PROPERTY SUMMARY

Wooded residential lot available in older subdivision just outside city limits.
Excellent price! Few restrictions. This is one of 5 lots located on Pepper Pot Place.
Live happy with few restrictions - have a garden and live free of hassles. 1300sf
min. Doublewide homes must be placed on permanent foundation and have
permanent underpinning of brick, rock or concrete. Wetlands. See Covenants.

nationalland.com/listing/10-acres-residential-lot-outside-city-limits-roxboro



National Land Realty
4221 Sentimental Ln
Apex, NC 27539
NationalLand.com



Terri Perry
Office: 919-584-9737
Cell: 919-625-8107
Fax: 864-331-1610
Tperry@nationalland.com

The above information is from sources deemed reliable, however the accuracy is not guaranteed.
National Land Realty assumes no liability for error, omissions or investment results.