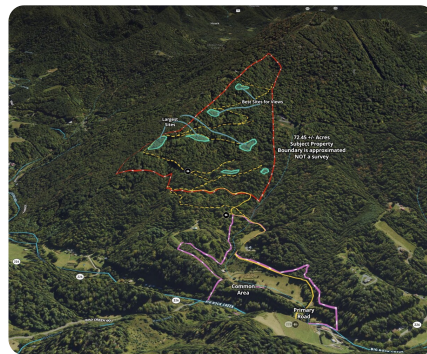
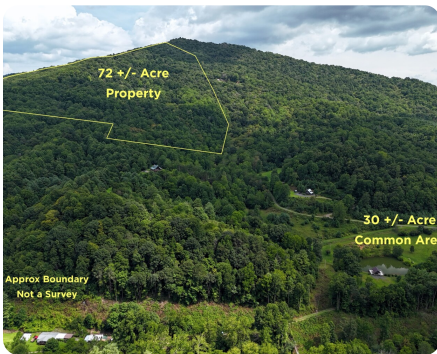




Private Woodlands with Shared Pond and Meadow Amenities

72.45 +/- Acres | Mitchell County, NC | \$499,000



ADDRESS

TBD Rock Crk Ridge Rd
Bakersville, NC 27511

LOCATION

Appointment required. Gated community. No drive-bys. 4WD is required to enter the property. Listing Agent can meet you and provide maps. Separate parcels are owned by separate individuals but they are being sold together only.

PROPERTY SUMMARY

Now is the time to create a wonderful place close to nature and away from the world when needed. This exceptional 72 acre private woodland with layered long range view potential, minimal restrictions, and gravel roads already in place is ready for you! There are many building options for your legacy retreat or family and friend compound at the top of this small gated community with only a few owners. These owners share over 30 acres of beautifully maintained meadows, ponds, creek access, and more. The community has a beautiful covered bridge entry and the road to the property meanders along the meadows and pond area. Enjoy use of the picnic areas and cook up fresh trout from the hatchery-supported waters. The property is lightly restricted but allows target shooting, ATV use, and chickens. Existing roads are wide and have a good gravel base, ditching. Owners may subdivide parcels into additional lots. HELENE UPDATE: No major damage, some down trees, bridge is still there!

nationalland.com/listing/private-woodlands-with-shared-pond-and-meadow-amenities



National Land Realty
13 Lynnette Dr
Fairview, NC 28730
Nationalland.com



Pat Snyder
Office: 828-618-4448
Cell: 828-761-0841
Fax: 864-331-1610
Psnyder@nationalland.com

The above information is from sources deemed reliable, however the accuracy is not guaranteed. National Land Realty assumes no liability for error, omissions or investment results.