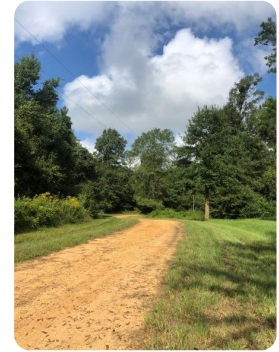




## Pearl River Retreat Lot 12

3.89 +/- Acres | Lawrence County, MS | \$48,250



### ADDRESS

Old Highway 27  
Wanilla, MS 39654

### LOCATION

From I-55, take the South Brookhaven exit onto Highway 84. Go East on 84 about 22 miles to the Monticello exit. Turn North on Highway 27. Go about 4 miles and turn right on to Old highway 27.. Property will be about 3 miles North on the right.

### PROPERTY SUMMARY

One of 25 beautiful Riverfront lots fronting Old Highway 27 along the Pearl River! Cypress Point Development has lots starting at 3 acres and up to 8.87. Or need a place to escape the madness or hurricanes? No better place to go "off the grid"! All Lots have gorgeous views of the Pearl River and access to the water. All lots have utilities readily available. The community is gated and has restricted covenants. This is a unique opportunity to own a small acreage lot along the Pearl River for your secluded get-a-away or fishing camp! OWNER FINANCING AVAILABLE

[nationalland.com/listing/pearl-river-retreat-lot-12-1](https://nationalland.com/listing/pearl-river-retreat-lot-12-1)



National Land Realty  
18648 Hwy 18  
Raymond, MS 39154  
[NationalLand.com](https://NationalLand.com)



Polly Anderson Ball  
Office: 601-539-9628  
Cell: 601-249-9192  
Fax: 601-878-5424  
[pball@nationalland.com](mailto:pball@nationalland.com)

The above information is from sources deemed reliable, however the accuracy is not guaranteed.  
National Land Realty assumes no liability for error, omissions or investment results.