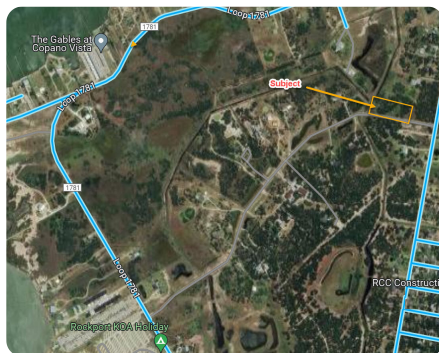


**SOLD**



## Exclusive Rockport Texas Homesite

2.53 +/- Acres | Aransas County, TX



### ADDRESS

131 Sanctuary Dr.  
Rockport, TX 78382

### LOCATION

Travel St. Hwy 35 south from Houston until you cross the Fulton Bridge. Go past the airport to airport rd.; turn right. Follow airport road to the end; turn left. Travel .5 miles or so on loop 1781 to Spanish Woods Dr.; turn left and travel .5 miles or so to the private entrance of San

### PROPERTY SUMMARY

Awesome home site opportunity inside this exclusive Rockport residential community. Build your dream home here! So much to do; fish, shop, eat, or just relax. Rockport Texas is a premier Texas hotspot. Whether this is a retirement home, a second home, or your family home; what a great place to live. Fish, festivals, shop, dine out or just go to the beach! You will not regret building here.

[nationalland.com/listing/exclusive-rockport-texas-homesite](https://nationalland.com/listing/exclusive-rockport-texas-homesite)



**National Land Realty**  
Regus (APEX) Executive Suites  
1135 Grand Central Parkway - Ste 302  
Conroe, TX 77304  
[Nationalland.com](https://Nationalland.com)



**Timothy Curl**  
Office: 281-317-0220  
Cell: 936-537-8862  
Fax: 864-331-1610

The above information is from sources deemed reliable, however the accuracy is not guaranteed.  
National Land Realty assumes no liability for error, omissions or investment results.