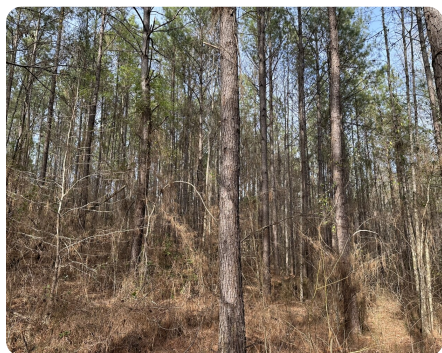


SOLD



Stewart Recreational & Timberland

40 +/- Acres | Bibb County, AL



ADDRESS

0 County Road 9
West Blocton, AL 35184

LOCATION

Contact us for property location details.

PROPERTY SUMMARY

This is a great recreational & timberland tract with a very nice thinned pine stand and a creek running through the middle of it. The tract is just off Scottsville Road, north and west of Centreville. The timber stand will be ready for a 2nd thinning in the next year or two. Access is by an old woods road that leads off Scottsville Road to the southwest corner and along the west property line.

nationalland.com/listing/stewart-recreational-timberland



National Land Realty
2809 8th Street
Tuscaloosa, AL 35401
NationalLand.com



Bruce Lanier
Office: 659-240-6301
Cell: 205-292-4465
Fax: 205-343-2144
Blanier@nationalland.com

The above information is from sources deemed reliable, however the accuracy is not guaranteed.
National Land Realty assumes no liability for error, omissions or investment results.