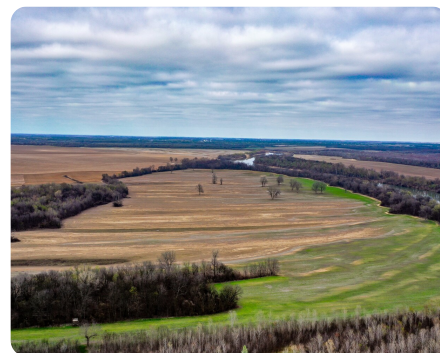


**SOLD**



## Bateman Bend Farm & Hunting Property

293.9 +/- Acres | Jackson County, AR



### ADDRESS

Jackson County Road 10  
Newport, AR 72112

### LOCATION

There are two roads to access the property. Both are off Highway 367 south of Newport. Take County Road 329 off Hwy 367 to County Road 355. Follow County Road 355 to County Road 10. Follow County Road 10 to the northern boundary of the property. The route is accessible at flood leve

### PROPERTY SUMMARY

The Bateman Bend Farm and Hunting Property is located in Jackson County on the White River. It is 293.9 deeded acres with 213.93 FSA cultivated acres and an additional 8.75 acres that are considered cropland, but has not been planted in many years and would make a great cabin spot. The remaining 71+/- acres are in timberland that is excellent deer habitat. When the White River leaves its banks, the farm will flood and holds a lot of ducks. The farm is non-irrigated and has been in soybean production for the past 5+ years. There is no current lease on the farm. Soils are Class II silt loam with an average NCCPI Soil Rating of 77.3. There are areas of food plots for the deer hunting and several areas that have been developed for duck hunting. The timber will flood during high water and ducks will use the timber and the flooded sections of the fields. The Bateman Bend Farm has tons of potential for a outstanding recreational tract and could be improved for crop production.

[nationalland.com/listing/bateman-bend-farm-hunting-property](https://nationalland.com/listing/bateman-bend-farm-hunting-property)



National Land Realty  
1501 N. Pierce St.  
Suite 104  
Little Rock, AR 72207  
[Nationalland.com](https://Nationalland.com)



**Jeremy Stephens**  
Office: 870-539-9854  
Cell: 870-672-3250  
[jstephens@nationalland.com](mailto:jstephens@nationalland.com)

The above information is from sources deemed reliable, however the accuracy is not guaranteed.  
National Land Realty assumes no liability for error, omissions or investment results.