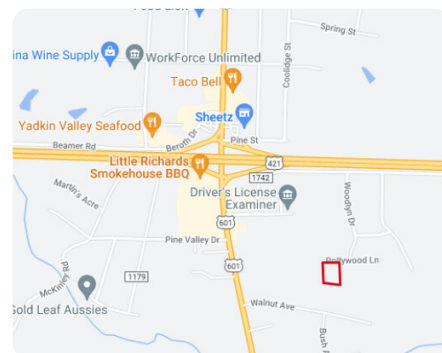
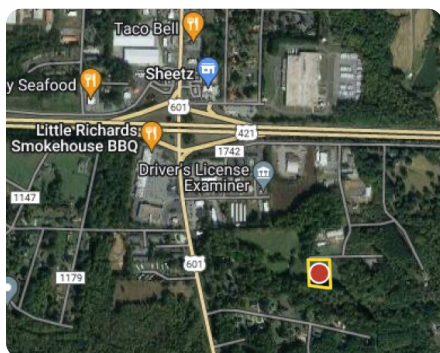


SOLD



## Woodlyn Business Park Lot 6

1.7 +/- Acres | Yadkin County, NC



### ADDRESS

0 Pollywood Lane  
Yadkinville, NC 27055

### LOCATION

Pollywood Lane Yadkinville NC 27055

### PROPERTY SUMMARY

1.7+/- acres of open, commercial development land in Woodlyn Business Park located in Yadkinville NC right off of US 421 & US 601 exit 257. The property is zoned LI which allows for a wide range of uses including office, light industrial, self-storage & automotive services (See Table of Permitted Uses)

Thriving retail & service market at prime HWY 421 Interchange

Public Water and Sewer are available at the site

Additional Tracts are available within Woodlyn Business Park. Contact the listing agent for more information!

[nationalland.com/listing/woodlyn-business-park-lot-6](https://nationalland.com/listing/woodlyn-business-park-lot-6)



**National Land Realty**  
305 Knox Farm Road  
Statesville, NC 28677-2785  
[NationalLand.com](https://NationalLand.com)

**Billy Parker**  
Office: 704-459-3937  
Cell: 704-575-9750  
Fax: 864-331-1610  
[Bparker@NationalLand.com](mailto:Bparker@NationalLand.com)

**Peter Mazeine**  
Office: 704-228-4925  
Cell: 704-906-1202  
Fax: 864-331-1610  
[Pmazeine@nationalland.com](mailto:Pmazeine@nationalland.com)

The above information is from sources deemed reliable, however the accuracy is not guaranteed.  
National Land Realty assumes no liability for error, omissions or investment results.