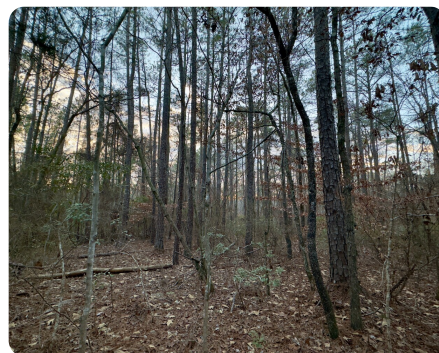
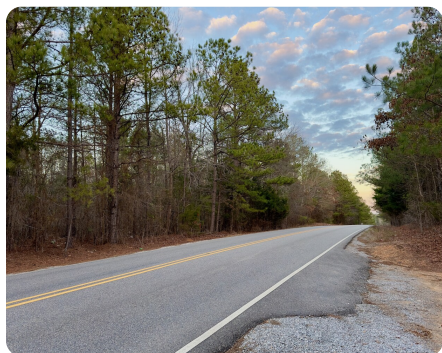


**SOLD**



## Randolph Hunting / Recreational Tract

121 +/- Acres | Bibb County, AL



### ADDRESS

Co Rd 36  
Randolph, AL 35180

### LOCATION

65 to Calera, to Randolph, to Co Rd 3,  
to property.

### PROPERTY SUMMARY

This 123-acre recreational tract is mostly flat with a good mix of merchantable hardwood and pine timber. This tract has around a quarter mile of paved county road frontage. Power, water, and fiberoptic cable are nearby. The tract is easily traversed via improved internal roads. This property offers quality deer and turkey hunting as well, and there are 5 established food plots with room for more.

In addition to a quality recreational property, it would also make a great place for a primary residence.

Randolph is a quiet community less than 1 hour South of downtown Birmingham, 1 hour north of Montgomery, and approximately 1 hour Southeast of Tuscaloosa. The University of Montevallo campus is less than 20 minutes away. This property is a unique offering in that it offers the recreational opportunities and solitude of a rural property while still offering the amenities and convenience that qualify it for use as a primary residence.

[nationalland.com/listing/randolph-hunting-recreational-tract](http://nationalland.com/listing/randolph-hunting-recreational-tract)



**National Land Realty**  
2633 Valleydale Rd.  
Suite 150  
Birmingham, AL 35244  
[NationalLand.com](http://NationalLand.com)

**Heath Fant**  
Office: 205-551-8272  
Cell: 205-240-3982  
Fax: 864-331-1610  
[Hfant@NationalLand.com](mailto:Hfant@NationalLand.com)

**Mitchell Jones**  
Office: 205-551-8982  
Cell: 205-529-5500  
Fax: 888-672-1810  
[Mjones@NationalLand.com](mailto:Mjones@NationalLand.com)

The above information is from sources deemed reliable, however the accuracy is not guaranteed.  
National Land Realty assumes no liability for error, omissions or investment results.