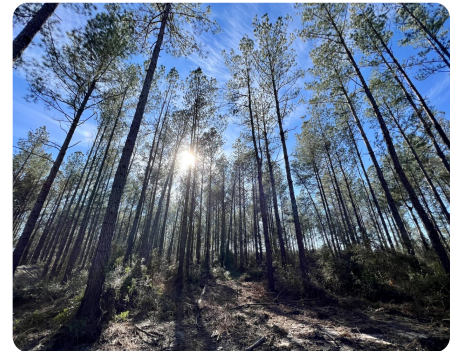




The Persimmon Creek Oasis – North

35 +/- Acres | Baldwin County, AL | \$324,900



ADDRESS

0 County Road 64
Robertsdale, AL 36507

LOCATION

Contact us for property location details.

PROPERTY SUMMARY

This waterfront retreat on Persimmon Creek located near Styx River sits just over 1/2 mile from Interstate-10 at Exit 53. Enjoy multiple uses such as fishing, hunting, and timber investment with the opportunity to build a cabin on the creek. Persimmon Creek, a wide, beautiful spring-fed year-round creek, flows the perimeter of the property. Direct access off paved CR-64 with utilities available.

nationalland.com/listing/the-persimmon-creek-oasis-north



National Land Realty
9 N. Conception St.
Mobile, AL 36602
Nationalland.com

Tom Leatherbury, Jr.
Office: 251-732-6159
Cell: 251-422-5643
Fax: 888-672-1810
Tleatherbury@nationallandrealty.com

Clint Flowers
Office: 251-572-7366
Cell: 251-387-0787
cflowers@nationalland.com

The above information is from sources deemed reliable, however the accuracy is not guaranteed.
National Land Realty assumes no liability for error, omissions or investment results.