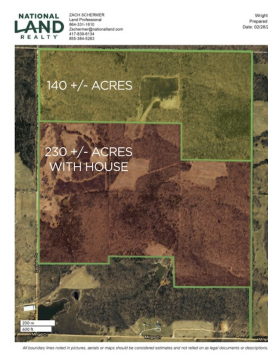


SOLD



Wilderness Haven: A Hunting Sanctuary

141 +/- Acres | Wright County, MO



ADDRESS

000 Laclede Dr
Falcon, MO 65470

LOCATION

From Lebanon head south on 5 HWY, turn East onto MO O until you hit a T in the road head South (MO O) Turn onto Urban Dr. Property starts on the corner post of the Mark Twain National Forest.

PROPERTY SUMMARY

Welcome to your hunting retreat in Wright County! Spanning across 140 +/- acres of prime hunting terrain, this property offers a sanctuary for outdoor enthusiasts. With an abundance of deer, turkey, and small game, every hunt promises adventure.

Natural features, include three ponds, a spring, and a meandering wet weather creek, providing both recreational opportunities and essential resources for local wildlife. The expansive food plot, meticulously maintained, serves as a magnet for diverse wildlife.

For those seeking additional hunting adventures, the property's 3/4 of a mile northern line borders Mark Twain National Forest, offering endless possibilities.

But the adventure doesn't end there. Bordering the South lies another 230 +/- acres of land, complete with a beautifully renovated home, providing an ideal opportunity to expand your hunting retreat.

nationalland.com/listing/wilderness-haven-a-hunting-sanctuary



National Land Realty
303 South Washington Street
Strafford, MO 65757
Nationalland.com



Zach Schermer
Office: 417-222-8211
Cell: 417-839-8134
Fax: 864-331-1610
Zschermer@nationalland.com

The above information is from sources deemed reliable, however the accuracy is not guaranteed.
National Land Realty assumes no liability for error, omissions or investment results.