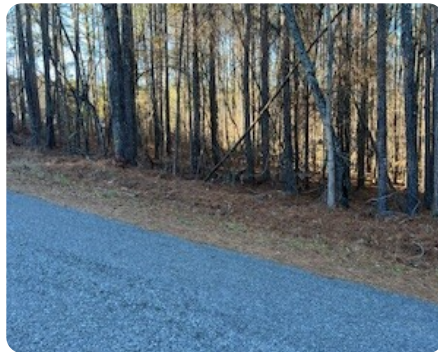




Beautiful Subdivision Lot Near Lake Weiss With Private Boat Dock Access

0.84 +/- Acres | Cherokee County, AL | \$30,000



ADDRESS

Lot 30 Yellow Creek Rd
Leesburg, AL 35983

LOCATION

From Leesburg, take Hwy 273 until you see Hwy 147 on your right. Take Hwy 147 until you see Hwy 599 on your left. Take 599 to the left, turn left onto Yellow Creek Drive, and proceed to Lot 30 on your right. Sign on property.

PROPERTY SUMMARY

This is a very attractive lot with endless possibilities. It is located in a very exclusive subdivision near the towns of Leesburg and Centre. You have the use of a private boat ramp to enjoy all the activities Lake Weiss has to offer. The lot is level and has approximately 120 feet of road frontage. Build your dream home or that perfect getaway vacation home. OWNER FINANCING AVAILABLE. PRICE REDUCED!!

nationalland.com/listing/beautiful-subdivision-lot-near-lake-weiss-with-private-boat-dock-access



National Land Realty
2250 North Druid Hills Road
Ste 234
Atlanta, GA 30329
Nationalland.com



William Davis
Office: 706-707-5162
Cell: 770-548-1957
Fax: 864-331-1610
Bdavis@nationalland.com

The above information is from sources deemed reliable, however the accuracy is not guaranteed.
National Land Realty assumes no liability for error, omissions or investment results.