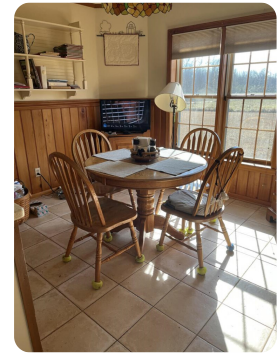


SOLD



Bayou Pierre, Hunting and Pasture

80 +/- Acres | Claiborne County, MS



ADDRESS

3051 Insemore Road
Hermanville, MS 39086

LOCATION

East on Highway 18 from Port Cibson,
turn north on Insemore Road and
property is about 2 miles on left

PROPERTY SUMMARY

This 3 bedroom, 2 bath home offers privacy, hunting, fishing, pasture, and frontage on historic Bayou Pierre. Rot-proof, termite-proof, paint-free cypress lumber cut and milled from the property make for an almost maintenance-free home. Almost all this construction is cypress. Maintenance-free Pergo flooring replaced wall-to-wall carpet. Remodeled all-electric kitchen brought everything within reach. Ceramic tile floors simplify cleaning and disinfecting. Style and color of ceramic tile make extra-large master bath and shower a standout. Storage and ease of access is tremendous. Huge fireplace and stone surround offer comfort on the coldest night. Cool season fescue, vetch, and three types of clover are the green standing hay for winter cattle grazing. Very little need for hay and protein supplements. Protein content of fescue rises to 11-12% with first frost. Three-acre spring-fed fishpond is 23 years old. An 8-inch valve in the back of the dam was added as insurance.

nationalland.com/listing/bayou-pierre-hunting-and-pasture



National Land Realty
710 Market Street
Port Gibson, MS 39150
NationalLand.com



Steve Purvis
Office: 601-745-7174
Cell: 601-415-7739
Fax: 601-932-1306

The above information is from sources deemed reliable, however the accuracy is not guaranteed.
National Land Realty assumes no liability for error, omissions or investment results.