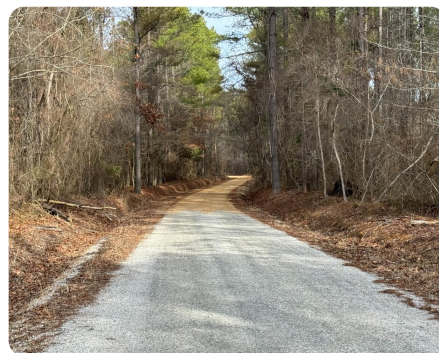


SOLD



Country Living & Lake

17 +/- Acres | Chickasaw County, MS



ADDRESS

267 CR 90
Houston, MS 38851

LOCATION

The entrance to the property is located on CR 90, 0.9 miles off Hwy 389 South of Houston, MS. From downtown Houston take Hwy 389 South. Go 6 miles to CR 90 on left. From Tupelo, go 36 miles South on the Natchez Trace Parkway. Exit onto Hwy 389, go 0.35 miles to CR 90 on left. <

PROPERTY SUMMARY

Looking for that country living weekend or retirement home to call yours? Well if you like privacy, fishing, or drinking coffee on the porch overlooking your own private lake, then you may want to see this place! Situated on 17 acres off of CR 90 in Houston, MS. This home built in 1994 has been newly renovated and recently updated to 5 bedrooms and 3 baths. Was also upgraded to 2845 SF and a bonus entertainment room was added. Home overlooks a 4-acre lake stocked with trophy bass. 9 +/- acres of mature plantation pine that is ready to be harvested. Property offers 1 food plot to satisfy any deer or turkey hunting desires. Quick and easy access off of the Natchez Trace Parkway and less than 40 minutes from both Starkville and Tupelo. Would make the perfect weekend getaway or full-time home for someone looking for country living. With spring and summer just around the corner, now is the time to buy this beautiful place! Come see it today!

nationalland.com/listing/country-living-lake



National Land Realty
223 Trace Ridge Drive
Kosciusko, MS 39090
NationalLand.com



Jonathan Stevens
Office: 601-804-3134
Cell: 601-278-1548
jstevens@nationalland.com

The above information is from sources deemed reliable, however the accuracy is not guaranteed.
National Land Realty assumes no liability for error, omissions or investment results.