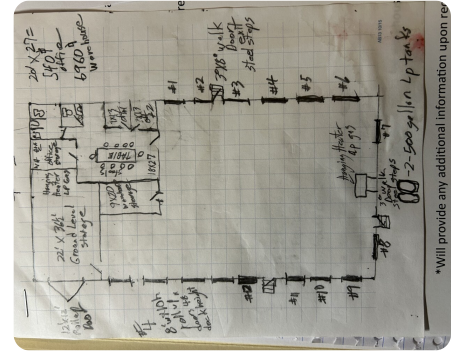


SOLD



# Moore Warehouse/Distribution Center

4.31 +/- Acres | Clarendon County, SC



\*Will provide any additional information upon request

## ADDRESS

6687 Puddin Swamp Rd.  
Turbeville, SC 29162

## LOCATION

Call Agent

## PROPERTY SUMMARY

This 7500 Sq. Ft. Commercial building is located on 4.25 acres approximately 5 miles East of I-95 in the Turbeville community. Formerly used as a bread distribution site, the building contains 6500 sq. ft. of propane gas heated warehouse/distribution space with 4-8x10' rollup doors 48" above ground, 12-6'x8' 32" overhead rollup doors Ground level shop with a 12'x12' rollup overhead door, 1000 sq. ft. of heated & cooled office space consisting of 2 private offices, 2 restrooms, open conference area and a equipment/storage room. 3-3'x7' walkthrough doors. Approximately 2 acres are enclosed with a 6' chained linked fence and approximately 2.3 +/-acres of unfenced land. The property and building has been properly maintained and is good condition. See the attached floor in pictures.

[nationalland.com/listing/moore-warehousedistribution-center](http://nationalland.com/listing/moore-warehousedistribution-center)



**National Land Realty**  
669 Marina Drive  
Ste B-4  
Charleston, SC 29492  
[NationalLand.com](http://NationalLand.com)



**Ron Wall**  
Office: 803-590-7994  
Cell: 803-460-6841  
Fax: 864-331-1610  
[Rwall@nationalland.com](mailto:Rwall@nationalland.com)

The above information is from sources deemed reliable, however the accuracy is not guaranteed.  
National Land Realty assumes no liability for error, omissions or investment results.