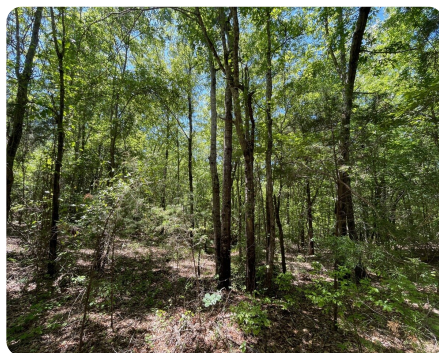
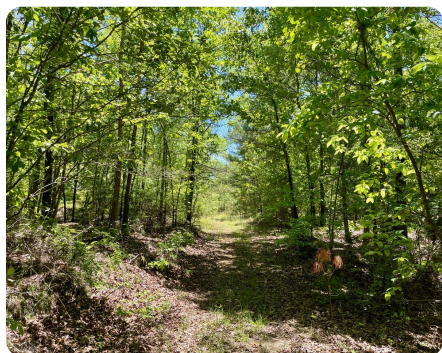


SOLD



Co Rd 36 15ac Residential /Recreational Tract #1

13.79 +/- Acres | Bibb County, AL



ADDRESS

0 CoRd 36
Randolph, AL 35180

LOCATION

65 S to Co Rd 25, to Co Rd 36, to
property.

PROPERTY SUMMARY

This 15+/-ac tract offers a ton of opportunities. The mostly flat tract is covered in a mix of merchantable hardwoods and pines. Besides potential income, the timber offers some great hunting and recreational opportunities. The area has been known to produce record book deer and turkey. The tract has good frontage on County Road 36. A good internal road that traverses the entire property with old timber roads, providing additional access and fire lanes. There are multiple good home sites. This tract offers the perfect place for quiet, comfortable country living while still being a short drive to Birmingham, Montgomery, or Tuscaloosa. You could walk out on your porch in the morning and watch deer and turkey feeding in your front yard. After work, you can sit on the back deck and watch the embers from your firepit drift into the stars with only the sounds of nature surrounding you.

Whether it's hunting, country living, trail riding, or a safe tax-sheltered timber investment, this property is exactly what you are looking for.

nationalland.com/listing/cord-36-10ac-residential-recreational-tract-1



National Land Realty
2633 Valleydale Rd.
Suite 150
Birmingham, AL 35244
Nationalland.com

Heath Fant
Office: 205-551-8272
Cell: 205-240-3982
Fax: 864-331-1610
Hfant@NationalLand.com

Mitchell Jones
Office: 205-551-8982
Cell: 205-529-5500
Fax: 888-672-1810
Mjones@NationalLand.com

The above information is from sources deemed reliable, however the accuracy is not guaranteed.
National Land Realty assumes no liability for error, omissions or investment results.