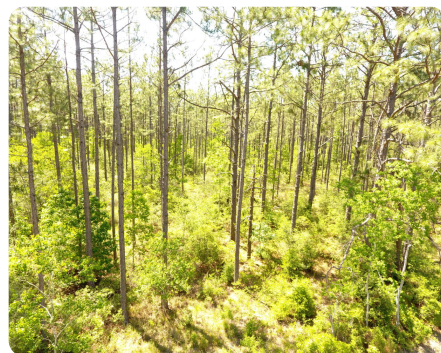


SOLD



Kingrey Cemetary Road 288

283.92 +/- Acres | Allen Parish, LA



ADDRESS

0 Kingrey Cemetary Road
Reeves, LA 70658

LOCATION

From the LA HWY 190 - Topsy Bel Road Intersection (Reeves, LA), travel south down Topsy Bel Road approximately 4.75 miles. Then, turn east (left) & travel down Allen Cole Road approximately 2.10 miles. Then, turn north onto Kingrey Cemetary Road and travel approximately .5 miles

PROPERTY SUMMARY

This property is divided into two pieces that swing corners with each other. The large portion of the property is approximately 240 acres and fronts Kingrey Cemetery Road for .25 miles. The smaller portion is approximately 48 acres and it does not touch Kingrey Cemetery Road. It is a special tract that supports a longleaf dominate timber type. With its large acreage & pipeline ROW that runs through the property, it is a recreationalist's dream. Utilities are available off Kingrey Cemetery Road which would provide a potential homesite location. Seller is to reserve 100% mineral rights.

nationalland.com/listing/kingrey-cemetary-road-288



National Land Realty
231 E. 6th Avenue
PO Box 1539
Oakdale, LA 71463
NationalLand.com



Daniel Rush
Office: 318-304-3555
Cell: 318-335-8870
Fax: 864-331-1610
Drush@nationalland.com

The above information is from sources deemed reliable, however the accuracy is not guaranteed.
National Land Realty assumes no liability for error, omissions or investment results.