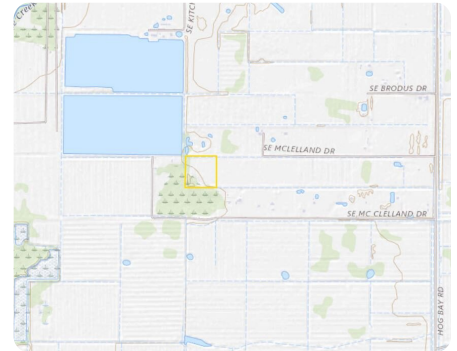
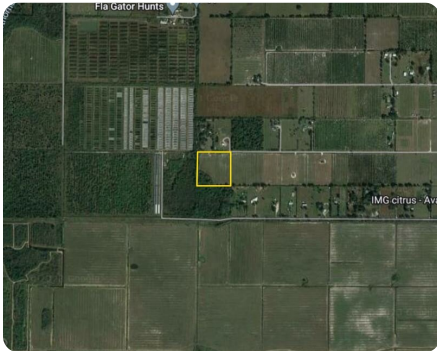


SOLD



Arcadia Ranch and Farm 10 acre Homesite

10 +/- Acres | DeSoto County, FL



ADDRESS

0 SE Broadus Drive Tract A
Arcadia, FL 34266

LOCATION

SR 70 East to right/South on Hwy 31 to right onto Hog Bay Extension. Cross CR 760A and continue for approximately 4.5 miles and then right/west on Broadus Drive. Property is at the end of Broadus on South Side.

PROPERTY SUMMARY

Escape to the tranquility of this picturesque 10-acre pasture just outside Arcadia. This sprawling piece of land offers a perfect blend of open pastures and charming wooded areas, creating a harmonious balance between nature and serenity. This property ensures privacy and security, making it an ideal canvas for your dream home or agricultural pursuits. The open pastures provide ample space for various possibilities, from equestrian ventures to farming endeavors. The lush greenery and expansive skies make this parcel a canvas for your vision, whether it's creating a homestead or a peaceful retreat. The land lends itself to versatile landscaping, giving you the freedom to design your oasis in the heart of Florida's countryside. The perfect blend of rural tranquility and convenient access to local amenities. The Peace River flows near Arcadia, providing opportunities for outdoor activities such as canoeing, kayaking, and fishing. Additional acreage and owner financing available.

nationalland.com/listing/arcadia-ranch-and-farm-10-acre-homesite



National Land Realty
2180 West First St
Unit 301
Fort Myers, FL 33901
Nationalland.com



Justus Koester
Office: 239-893-9126
Cell: 239-898-0163
Fax: 239-541-8375
Jkoester@nationalland.com

The above information is from sources deemed reliable, however the accuracy is not guaranteed.
National Land Realty assumes no liability for error, omissions or investment results.