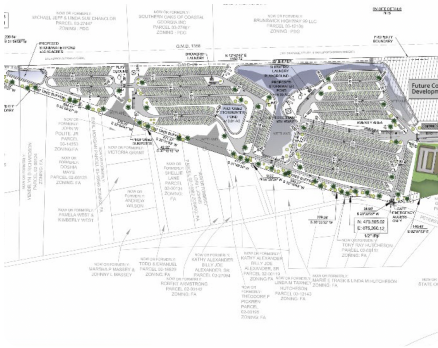


UNDER CONTRACT



## Highway 99 Commercial

54 +/- Acres | Glynn County, GA | CALL FOR PRICE



### ADDRESS

168 Petersville Road  
Brunswick, GA 31525

### LOCATION

3,163 feet east of exit 42,  
Interstate 95.

1,263 feet west of intersection  
of Highway 99 and Highway  
17

### PROPERTY SUMMARY

Excellent RV Park/Commercial Site located just 1,550 feet from Buc-ee's which is currently under construction. Located along a well-traveled corridor, GDOT is currently four-laning the stretch of Highway 17 and will be installing roundabouts to help with traffic flow. The current conceptual plan shows a mix of up to 500 RV sites as well as commercial parcels up against Highway 99. Excellent location less than 3,100 feet east of the onramp of exit 42 on Interstate 95. The area is rapidly growing with new residential, commercial, and industrial uses in the immediate plans. The majority of due diligence items have been completed and are available upon request. The seller will also consider breaking up the site and selling smaller parcels and/or a rezone of the property depending on the intended use.

[nationalland.com/listing/highway-99-commercial](https://nationalland.com/listing/highway-99-commercial)



National Land Realty  
50 Aviator Plaza  
Suite 105  
St. Simons Island, GA 31522  
[NationalLand.com](https://NationalLand.com)



Tommy Stroud, Jr.  
Office: 912-572-0245  
Cell: 912-223-3932  
Fax: 864-331-1610  
[Tstroud@nationalland.com](mailto:Tstroud@nationalland.com)

The above information is from sources deemed reliable, however the accuracy is not guaranteed.  
National Land Realty assumes no liability for error, omissions or investment results.