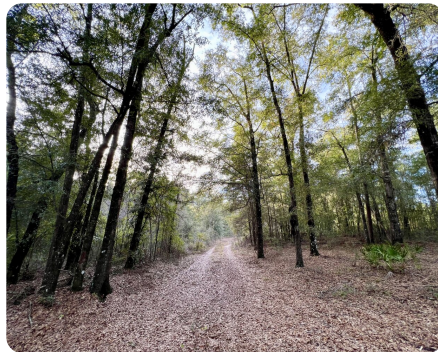




Mobile County Highway-158 Industrial Parkway Commercial or Industrial Site

198 +/- Acres | Mobile County, AL | \$1,499,900



ADDRESS

0 Industrial Parkway
Eight Mile, AL 36613

LOCATION

Call agent for directions

PROPERTY SUMMARY

This multi-use commercial or industrial site is located on Highway-158, in the fast-growing Mobile County. Conveniently situated just 4.5+/- miles west of Interstate-65 & minutes from the Port of Mobile. Hwy-158 was recently expanded as a bypass to connect I-65 in Saraland, Alabama to Lucedale, Mississippi. Multiple entrances and more than 2,600' frontage on Hwy-158, provides easy big rig access from the 4-lane highway. The property has a gently rolling topography and is heavily wooded with hardwood timber. Seabury Creek bisects the tract providing a year-round water source. Utilities located roadside. Shown by appointment only.

nationalland.com/listing/mobile-county-highway-158-industrial-parkway-commercial-or-industrial-site



National Land Realty
9 N. Conception St.
Mobile, AL 36602
NationalLand.com



Clint Flowers, ALC
Office: 251-572-7366
Cell: 251-387-0787
cflowers@nationalland.com

The above information is from sources deemed reliable, however the accuracy is not guaranteed.
National Land Realty assumes no liability for error, omissions or investment results.