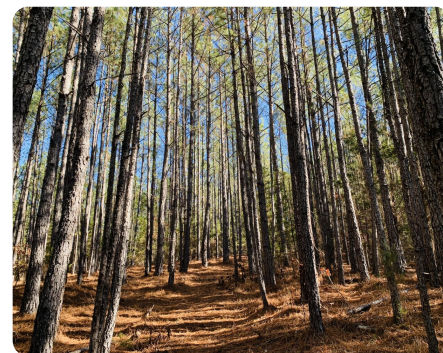


**SOLD**



## Coon Creek Timber and Hunting

121.11 +/- Acres | Chester County, SC



### ADDRESS

0 Stone Road  
Chester, SC 29706

### LOCATION

From Columbia, take I-26 West towards Greenville. Take exit 97 towards Peak on US-176. Keep right onto US-176 at end of ramp and continue 6.6 miles. Keep right onto R Stoudemayer Road. After 1.9 miles, take a slight left turn onto Peak Bypass. At end of Peak Bypass, turn right onto Maye

### PROPERTY SUMMARY

Nestled amidst the natural beauty of Chester, South Carolina, this property invites you to explore a landscape that's both captivating and versatile. Approximately 1000 +/- feet of paved road frontage provides plenty of access to this 125 acres +/- . Pine timber covers roughly 75% of the property with a majority of the remaining acreage consisting of a variety of mast-producing hardwood species including several species of oaks, walnut, hickory, sycamore, beech, and poplar. Many of these hardwoods wrap the banks of Coon Creek as the creek meanders through the property. The picturesque scenes along the creek provide not only great aesthetics but also ample food for the local deer and turkey populations for the avid hunter. A high-tension powerline provides for easy shooting lanes and a distribution line crosses the property near the front for easy access to electricity for your next homesite. Please contact the listing agent directly with any questions or to line up a showing.

[nationalland.com/listing/coon-creek-timber-and-hunting](https://nationalland.com/listing/coon-creek-timber-and-hunting)



**National Land Realty**  
1721 Saunders Street  
Columbia, SC 29201  
[NationalLand.com](https://NationalLand.com)



**Nicholas Ardis**  
Office: 803-674-5779  
Cell: 803-236-8411  
Fax: 864-331-1610  
[Nardis@nationalland.com](mailto:Nardis@nationalland.com)

The above information is from sources deemed reliable, however the accuracy is not guaranteed.  
National Land Realty assumes no liability for error, omissions or investment results.