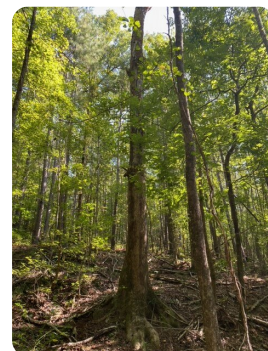


SOLD



Wigdon Farms Lot 5

7.97 +/- Acres | Lee County, AL



ADDRESS

0 Wigdon Rd Lot 5
Opelika, AL 36801

LOCATION

North of Oak Bowery on Wigdon Rd.
Take Wigdon Rd 2 miles. The
property is on the left side of the
road.

PROPERTY SUMMARY

Rural 8.68-Acre Lot near Opelika City Limits

Natural Retreat: Immerse yourself in country living surrounded by green landscapes and mature trees, creating a peaceful escape from city life.

Convenient Location: Despite its rural setting, this property provides easy access to Opelika's city limits, ensuring a balance between seclusion and urban amenities.

Versatile Land: With 8.68 acres, there's ample space to bring your vision to life, whether it's building a residence, a farmhouse, or a self-sufficient retreat.

Investment Potential: This undeveloped lot presents an opportunity for personal use or a strategic investment as the demand for rural properties continues to grow.

Accessible by Gravel Road: A gravel road entrance adds a touch of rustic charm,

nationalland.com/listing/wigdon-farms-lot-5



National Land Realty
4267 Lomac Street
Montgomery, AL 36106
NationalLand.com

Brandon Fowler
Office: 334-489-5741
Cell: 334-332-3006
Fax: 864-331-1610
Bfowler@NationalLand.com

Travis Chaffin
Office: 706-707-5932
Cell: 706-302-8198
Fax: 864-331-1610
Tchaffin@NationalLand.com

The above information is from sources deemed reliable, however the accuracy is not guaranteed.
National Land Realty assumes no liability for error, omissions or investment results.