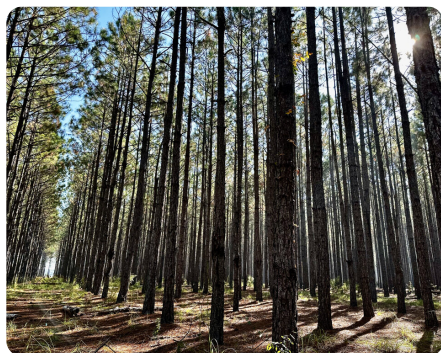


SOLD



Hill Farm Rd. Pine Timber Homesite

21.87 +/- Acres | Wheeler County, GA



ADDRESS

0 Hill Farm Rd.
Alamo, GA 30411

LOCATION

From Alamo,

PROPERTY SUMMARY

Rarely available parcel size in the country! This County Line property is located just in the edge of Wheeler County with the Laurens County border serving as its Northern boundary. This property boasts beautiful mature pine timber that is an ideal habitat for upland game and deer. This property is also well suited for a homesite, camping site, or small recreational / hunting property. There are no restrictions on this tract, which allows for RV parking, mobile homes, and other semi-permanent living arrangements. In addition, there are multiple accesses, and power is readily available which makes this property well-suited for a cozy recreational escape or primary homesite. Make this place your own, today!

nationalland.com/listing/hill-farm-rd-pine-timber-homesite



National Land Realty
1070 Salem Walk Drive
Suite 4
Greensboro, GA 30642
NationalLand.com



Austin Hill
Office: 229-210-8437
Cell: 229-444-3275
Ahill@nationalland.com

The above information is from sources deemed reliable, however the accuracy is not guaranteed. National Land Realty assumes no liability for error, omissions or investment results.