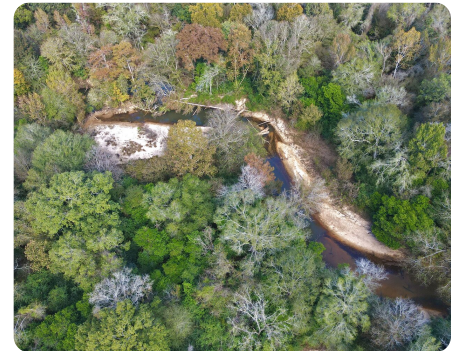


SOLD



Patsaliga Creek Camp Hunting & Timber Retreat

986 +/- Acres | Crenshaw County, AL



ADDRESS

0 Private Road
CR 35
Luverne, AL 36049

LOCATION

Contact agent for directions.

PROPERTY SUMMARY

This rare waterfront property offers a chance to own a turn-key slice of paradise. It boasts an impressive 4+ miles of scenic waterfront with long views and beautiful sandbars provided by 2.2± miles of frontage along the picturesque Patsaliga Creek and 2± miles on Little Patsaliga Creek, giving you year-round fishing, boating, and swimming opportunities. The property features a 3-bedroom cabin overlooking a sprawling agricultural field, ideal for dove hunting and watching game from the porch. The cabin is equipped with both conventional power and solar/generator backup, and the multi-bay equipment sheds provides ample space for storing and maintaining your equipment. The hunting is fantastic, with trophy deer, turkey, wild hog, and waterfowl. Enjoy a network of large 20± food plots and multiple duck ponds, creating a habitat that attracts and sustains quality wildlife. Nature lovers and timber investors alike will appreciate the various timber types, consisting primarily of mature hardwood, complemented by mature pine plantations and some younger hardwood stands for ideal bedding habitat. It's located n

nationalland.com/listing/patsaliga-creek-camp-hunting-timber-retreat



National Land Realty
9 N. Conception St.
Mobile, AL 36602
Nationalland.com



Clint Flowers
Office: 251-572-7366
Cell: 251-387-0787
cflowers@nationalland.com

The above information is from sources deemed reliable, however the accuracy is not guaranteed. National Land Realty assumes no liability for error, omissions or investment results.