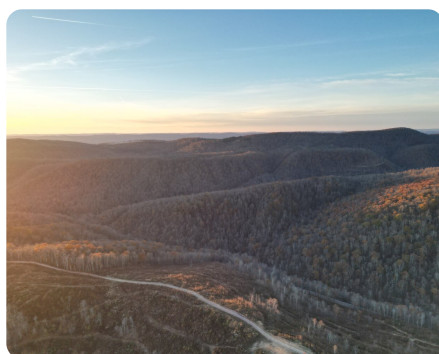
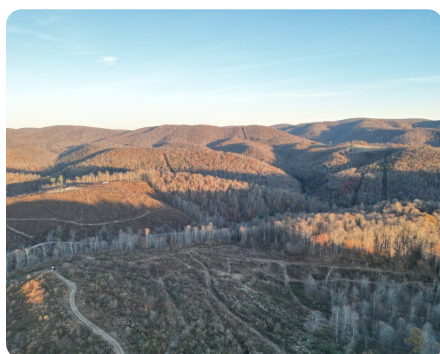


SOLD



Homesite in Scenic "Snowy Peaks at Winterburg" in Terra Alta, Lot#55

6 +/- Acres | Preston County, WV



ADDRESS

0 County Road 51/3
Terra Alta, WV 26764

LOCATION

39.40736, -79.59628

PROPERTY SUMMARY

This 1.06-acre lot is situated within the newest scenic mountain developments in Terra Alta, WV. This lot is almost completely square, and sloping down from the very good access road. There is a phenomenal mountain view from the backyard looking to the west. The evening sunset views from this lot will be enjoyed for generations to come. This would be ideal for building a weekend getaway, Airbnb, forever home, or a seasonal retirement retreat. This lot also has the option for the buyer to expand their acreage by purchasing the lot across the access road, lot# 56. And is also adjacent to lots 59 & 60.

nationalland.com/listing/homesite-in-scenic-snowy-peaks-at-winterburg-in-terra-alta-lot55



National Land Realty
244 Stretch Run Drive
Jane Lew, WV 26378
NationalLand.com



Landon Reeves
Office: 681-352-3247
Cell: 865-591-5245
Fax: 864-331-1610
Lreeves@NationalLand.com

The above information is from sources deemed reliable, however the accuracy is not guaranteed.
National Land Realty assumes no liability for error, omissions or investment results.